



# Murrumbidgee Irrigation

## DPI Water Allocations

Stock & Domestic	100%
Town	100%
High Security	95%
General Security	33%

AS AT 15 SEPTEMBER 2017

## Storages at 31 October 2017

Burrinjuck	59%
Blowering	64%

## EASYWATER

[www.mirrigration.com.au](http://www.mirrigration.com.au)  
Freecall 1800 822 450

## AGM

A reminder that the nineteenth Annual General Meeting of shareholders will be held on:

- Monday, 13 November 2017
- Historic Hydro Motor Inn, Chelmsford Place, Leeton
- Registration is from 7pm for a 7.30pm start.

## AGM bus service

Subject to shareholder interest MI is offering a bus service to our AGM in Leeton. Please phone (02) 6962 0200 before 5pm, Friday 3 November to register your interest.

Our privacy statement can be downloaded from our website: [www.mirrigration.com.au](http://www.mirrigration.com.au)

Contact MI if you no longer wish to receive this newsletter.

# NEWS IN BRIEF

OCTOBER 2017 Newsletter

## Customer response helps prevent supply restrictions

A significant supply shortage was averted last weekend thanks to a positive response by our customers and a proactive compliance approach.

Initially a shortfall of up to 500 ML was anticipated due largely to the difficulty in forecasting customer needs 7 days in advance – this is the lead time required for water to be delivered from our dams. By taking a proactive approach and contacting customers directly we were able to reduce demand for non-critical orders (like dam filling) and reschedule any orders lodged outside the 48 hour notice period.

Our compliance teams were also in operation throughout this period including overnight. Customers taking water without an order or above their ordered flow rate received an SMS warning and then had their supply physically suspended. Pleasingly most customers responded to the SMS with immediate action.

Thank you to customers who delayed their orders and put off any non-critical needs and also to WaterNSW and Coleambally Irrigation who worked with and helped to restore the system supply to normal as soon as possible.

## Annual General Meeting reminders

A reminder that the nineteenth Annual General Meeting of shareholders will be held on Monday, 13 November 2017 at the Historic Hydro Motor Inn, Chelmsford Place, Leeton. Registration is from 7pm for a 7.30pm start.

## Annual Report & 2017 Company Review

Our 2017 Annual Report and Company Review is available on our website: [www.mirrigration.com.au/About-Us/Annual-Reports](http://www.mirrigration.com.au/About-Us/Annual-Reports).

## A & B Class Director Election

Ballot papers have been posted to A Class shareholders to elect an A Class member director. The ballot closes on 7 November 2017.

Shareholders are also advised that B class director Ian Blight has stepped down after discovering that he did not meet the eligibility criteria for the position. A casual vacancy has now arisen and an election will be held to fill the position. Nominations are open and close on Sunday 12 November 2017. Nomination forms can be obtained from the Company's offices: phone: (02) 6962 0200, Research Station Road, Hanwood NSW 2680 or Dunn Avenue, Leeton NSW 2705.

## Foreign water ownership – new ATO requirements

Recent changes to Commonwealth legislation now require all Water Entitlement that is owned by a foreign entity to be registered with the ATO. If you own Water Entitlement and are classed as a foreign entity for taxation purposes you are required to disclose this information to the ATO by 30 November. You also need to advise Murrumbidgee Irrigation of your foreign entity status if you are an MI shareholder. We will be writing directly to shareholders about this soon. More information on the new requirements is available from the ATO website <https://www.ato.gov.au/General/Foreign-investment-in-Australia/Water-register>

## Plan ahead when ordering water

With water orders now starting to increase, please remember that providing notice for water orders is increasingly important. It is also important that your orders are as accurate as possible. Please take particular care when setting your start and stop times and make sure that you take the flow rate that you order. If you would like some assistance in using our EASYWATER ordering system, please contact us on 02 6962 0200. Your Division Operator can also assist you to provide a more accurate water order.

## Modernisation updates

### South western area modernisation – extended winter shutdown 2018

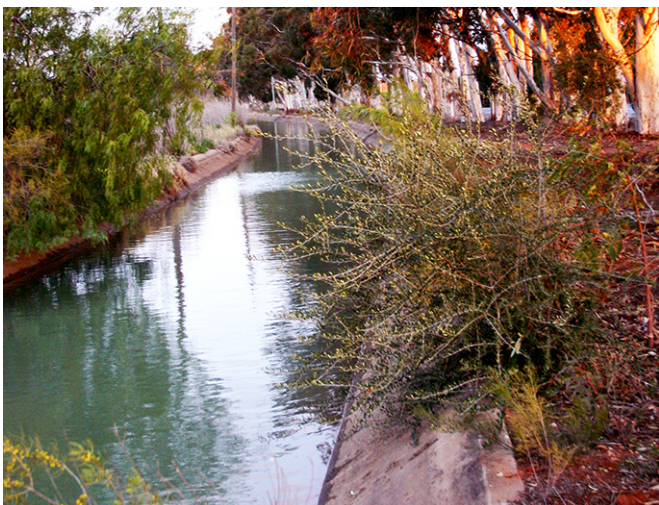
In 2017/18, we will be undertaking modernisation works throughout the south-western part of our network.

The modernisation works will result in the automation of these systems, including customer outlets. Where access is possible, automation and outlet renewal works will continue throughout the current irrigation season. To complete these major works, we are anticipating an extended 2018 winter shutdown period in areas including the Sturt Canal and Benerembah channel systems, as well as the Tabbita and Wah Wah districts.

If you have any questions or would like more information on the modernisation works or expansion opportunity please call (02) 6962 0200.

### Tharbogang modernisation works

Early works have commenced on the Main Canal at Tharbogang. These works will improve access and remove substantial vegetation growth adjacent to the channel in advance of possible lining works next winter.



## Rice growing customers

Please remember all rice water treated with herbicides or pesticides has a 28-day holding time before it is allowed to be discharged into our drainage works.

Please contact us immediately if you suspect that water containing chemicals has entered our drainage works to ensure that we can respond effectively.

Fortnightly rice water use targets will be available on our website to enable customers to track their rice water use and also to assist with water budgeting. For further enquires please contact us on 6962 0200.

## Stay clear of irrigation channels

Please don't swim in channels and look out for children and pets.

Recent channel lining projects in the Lake View and Northern Branch Canals, including fencing, have significantly changed channel conditions in these areas. The new High-density polyethylene lined channels are very slippery compared to the old earthen or concrete sections. We have installed fencing along lined sections to prevent accidental entry to the channels.



Also, with increasing automation regulator gates are controlled remotely meaning flows and conditions can change quickly. Regulator gates can open without notice and create a trap, while siphons and pipes can create powerful suction or a water surge.

There are many other hazards associated with channels that make them particularly dangerous to swimmers including submerged objects, strong undercurrents and varying channel depths.