

# Mirrool Creek Branch Canal & Hanwood Laterals 6 & 17



Mirrool Creek Branch Canal (MCBC) works during the 2019 winter works period will improve the level of service to customers by fixing performance issues and will increase capacity with the upper pools of the MCBC. Works include the addition of 12 new Flume Gates to the first 12 regulators to improve control of flows, bridge and offtake works.

## Works:

Construction works will commence at the start of June and works will be completed by the end of July 2019.

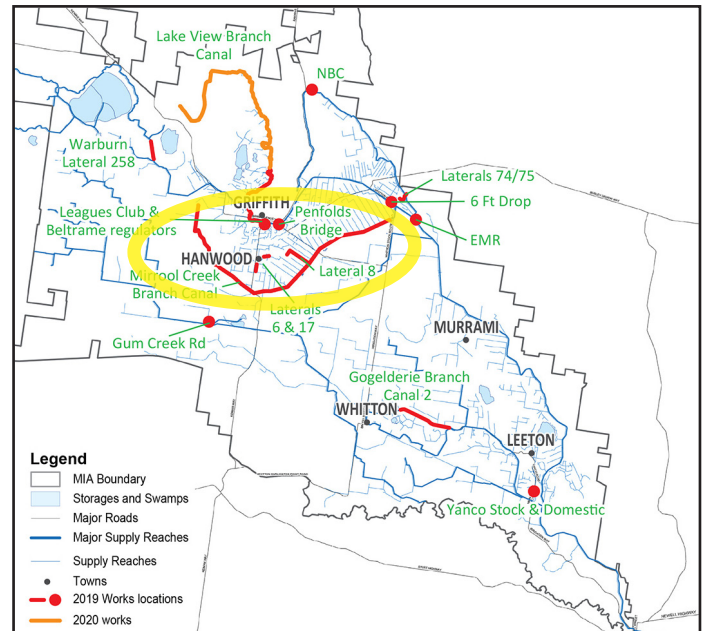
## Works will include:

- Partial Flume Gate upgrade of the 12 regulators downstream of the MCBC offtake
- Removal of two constraint bridges
- Upgrade of one bridge, and
- Two new lateral offtakes.

Information regarding construction, road and access changes will be provided as the work progress - see MI's website for updates to this fact sheet: [www.mirrigation.com.au](http://www.mirrigation.com.au)

Where can I get more information?

For more information please contact MI Customer Engagement Officer, Sam Daniel, 0400 341 679.



## Hanwood Laterals 6 & 17

We are also installing new pipeline on Lateral 6 and 17 in Hanwood over the 2019 winter works period.

## Works include:

- Lateral 6: decommissioning of concrete lined channel and installation of new pipeline
- Lateral 17: decommissioning of earthen channel and installation of new pipeline

Construction works will commence at the end of May and works will be completed on Lateral 6 by mid-June 2019 and Lateral 17 by early July 2019.