

# Warburn - Channel Lining Lateral 258



Lateral 258 will be lined in the 2019 winter works period to eliminate seepage issues. This will improve the level of service to customers and enable the full utilisation of properties next to the channel.

Works also include desilting, and channel bank restoration.

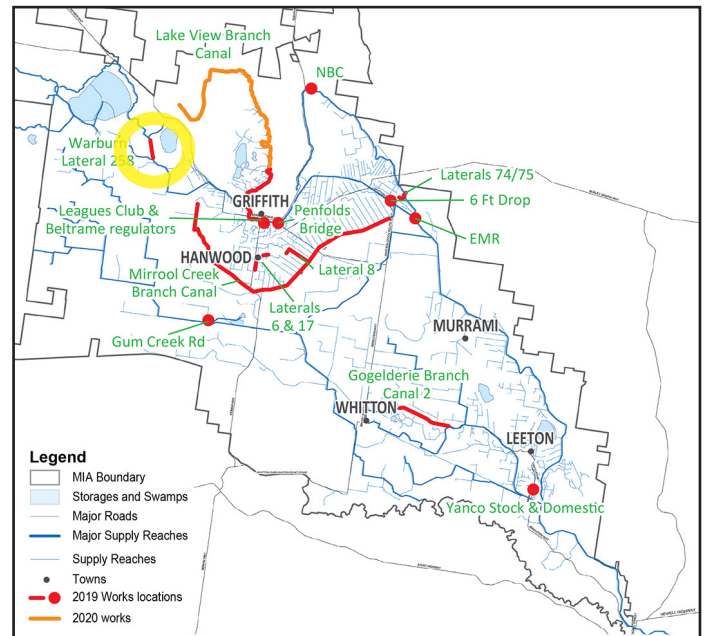
The new lined channels will have different characteristics (eg. very slippery), hence we will be erecting 1.8-metre-high fencing in key areas.

Construction works will commence at the start of July and works will be completed by the end of August 2019.

Information regarding construction, road and access changes will be provided as the work progress - see MI's website for updates to this fact sheet:  
[www.mirrigation.com.au](http://www.mirrigation.com.au)

## Where can I get more information?

For more information please contact MI Customer Engagement Officer, Matt Woodward 0427 221 425.



*Lateral 258 in Warburn will be lined with high-density polyethylene (HDPE) like the channel in this photo.*