

# Company overview

## Introduction

Murrumbidgee Irrigation Limited (MI) is one of the largest private irrigation companies in Australia, with our core business being water distribution.

We provide irrigation, water, and drainage services to the Murrumbidgee Irrigation Area (MIA).

We operate as an unlisted public company (limited by shares), owned by the irrigators we supply.

The MIA is one of the most diverse and productive regions in Australia. To enable sustainable and productive water use, we strive to improve water distribution efficiency through innovation, infrastructure upgrades and better business management.

Irrigation delivers 50% of Australia's agricultural profits, with the sector crucial to a resilient and prosperous future. The Murray-Darling Basin supports two thirds of Australia's irrigated farming.

### Our history

The MIA was established in 1912 following construction of Burrinjuck Dam (in the Snowy Mountains), Berembé Weir and 139km of canals to drought proof inland Australia and provide food security for the nation. The MIA was conceived by the government of the day as a purpose-built scheme, designed to feed and provide employment opportunities for a growing nation. The original vision for the MIA is as important today as it was over 100 years ago.

## System

WaterNSW controls the release of water from Burrinjuck and Blowering Dams into the Murrumbidgee River.

We are licensed by the NSW Government to divert water from the Murrumbidgee River and deliver it to our customers. In doing this we comply with an Environmental Protection Licence issued by the Environment Protection Authority – NSW. There are two river offtakes within the system: Berembé Weir near Narrandera which feeds into the Main Canal, and Gogeldrie Weir near Leeton which diverts water into the Sturt Canal. The Main Canal has a maximum flow capacity of 6,600 ML/day while the Sturt Canal has a capacity of 2,200 ML/day.

## Operations overview

As at 30 June 2025



**159 employees**  
(full time equivalent)



**Offices**  
in Griffith and Leeton



**3,094**  
landholdings



**378,911 ha**  
total area of MIA



**Up to 128,723 ha**  
total area of irrigated crops



**1,052,041 ML**  
company water licenses



**1,330,048**  
total delivery entitlements in issue



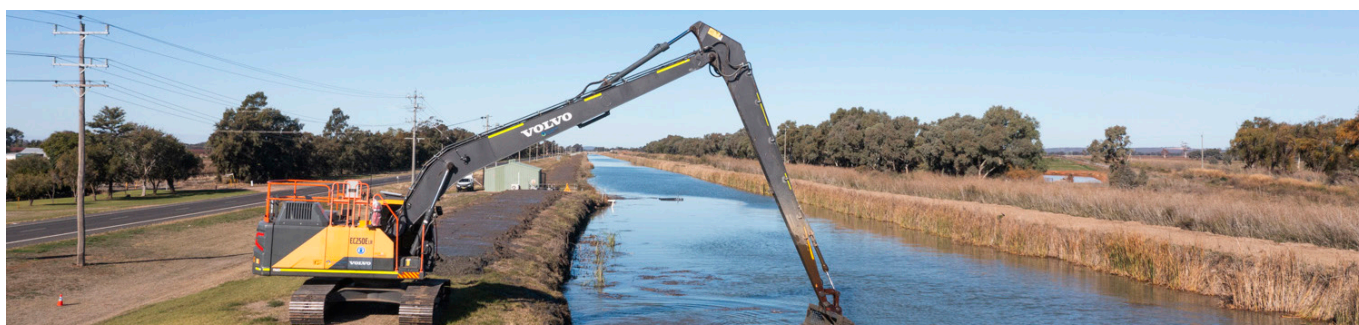
**1,710 km supply systems**  
194 km piped, 100 km lined, 1,446 km earthen



**Just over \$740M**  
assets



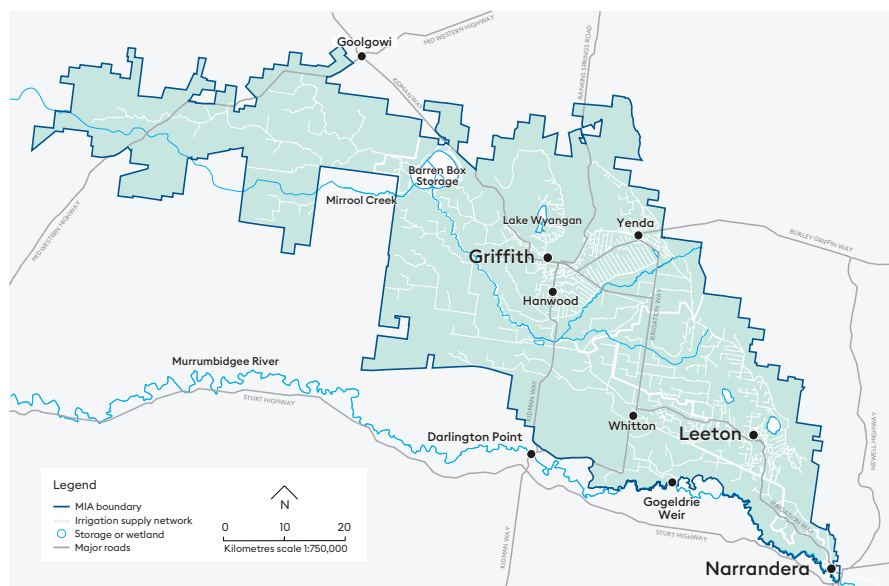
**Full coverage communications**  
16 towers 2 control centres





## General information

### Area of operations



### Understanding entitlements



#### Water Entitlements (WEs)

A water entitlement contract provides customers with a Water Allocation Account connected to the Company Water Licences.



#### Delivery Entitlements (DEs)

A simple and fair way to share the available flow rate.\*



#### Shares in MI

Customers holding Water Entitlements may also own shares in MI, in the ratio of one share per megalitre of Water Entitlement held.

\*150 DE = 1 ML Assured Flow Rate.

### Specific crops planted area

2023/2024	
Crop	Total area (ha)
Citrus	7,439
Cotton	14,291
Nuts	7,878
Other crops	0
Other fruits	987
Plantation	86
Rice	19,431
Summer cereals	2,495
Summer oilseeds	440
Summer pasture	530
Vegetables	655
Vines	16,181
Winter cereals	47,812
Winter oilseeds	3,500
Winter pasture	4,935

### Environment

MI delivers on its commitment to sustainability through facilitating the effective and timely delivery of water to natural assets, and through collaborating with government agencies to protect key environmental sites including RAMSAR Wetlands. We also take action to reduce energy use and minimise our environmental footprint.

### Customers and shareholders

MI's Water Access Licences (WALs) are issued by the NSW Government. Customers who hold Water Entitlements (WEs) within MI's WALs have a Water Entitlements Contract with MI. This entitles customers to a Water Allocation Account for managing their annual water allocations.

Customers who hold Delivery Entitlements (DEs) have a Water Delivery Contract. Our channel system has a fixed capacity and Delivery Entitlements provide a simple and fair way to share the available flow rate.

In addition, customers holding Water Entitlements may also own shares in MI, in the ratio of one share per megalitre of Water Entitlement held. There are three categories of shares: A, B and C class shares. Only A and B class shareholders with landholdings who also have a Water Delivery Contract are entitled to vote at General Meetings and vote for shareholder-elected directors of MI.

Underpinning the contracts are a set of complementary Rules, all of which can be found on our website.

### Water ordering

We order the Murrumbidgee Irrigation Area's forecast irrigation water requirements from WaterNSW seven days in advance. This allows enough time for the water to travel from Burrinjuck and Blowering Dams to the river offtakes. As our system moves toward being demand driven, ordering times are

reducing, and already in some areas orders can be lodged with just 24 hours' notice and changed with 6 hours' notice. With a centralised control room which operates 24 hour/day – 7 day/week when required, automation means many fixes are now in the control centre, not on the ground, so one phone number connects customers to the centre where their query is quickly assessed.

### Our employees

We place our people at the core of our organisation's efforts in delivering excellence for customers. As such, MI strives to be an employer of choice and to attract talented people whether they originate from within or beyond the region. The safety and well being of our team is prioritised not just through policies and day to day practices but via a whole of organisation culture of safety which has delivered a very strong safety record. Our employees have access to a range of benefits such as competitive salaries, remote area housing and rental support, wellbeing programs and flexible working arrangements.

### Reporting

Copies of our Annual Reports and Annual Compliance Reports can be found on our website. These documents contain information on our corporate performance, planned infrastructure upgrades and customer initiatives as well as our environmental licensing reporting.