

Connecting your pump to the MI network

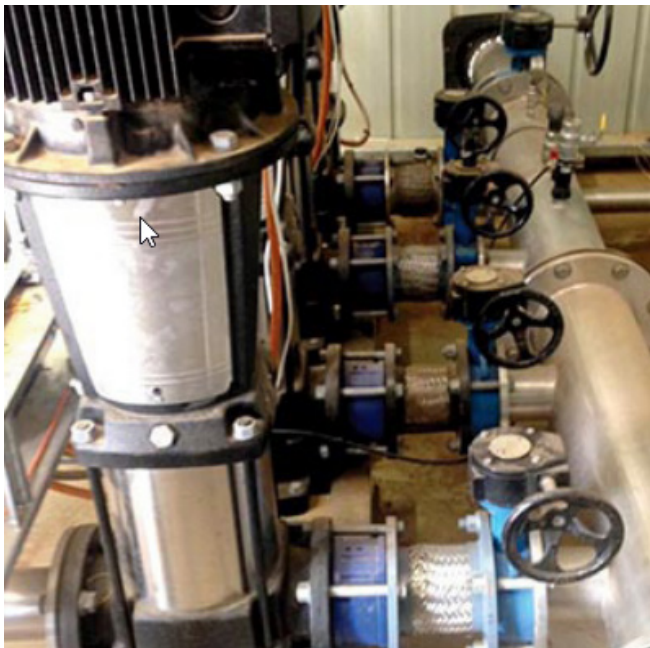
Things to consider when connecting your farm pump to the MI network.

Flow Interruption

Flow interruption measures are a simple way to protect your pump from unintended interruptions to water supply. Irrigation equipment retailers can provide advice on how best to protect your pump from flow interruptions. Your flow protection equipment should be installed after the location of the MI metered outlet or supply point.

Screening and filtration

The installation of filtration devices or screens can protect your infrastructure from silt build up and seasonal changes to water quality. The water provided by MI to your metered outlet is unfiltered. If you choose to install a filter or screen as part of your on-farm infrastructure it needs to be located after the MI metered outlet or supply point.



An example of a non-return device.

Backwash

Backwash from cleaning on-farm filtration systems should be retained on farm or directed into MI's drainage channels. Backwash cannot be directed into MI supply channels because of the risk of chemical or other contamination.

Direct Connections

Pumps that are directly connected to the MI channel system must have a non-return device installed after the MI metered outlet. This means that water can only be delivered one-way (from the MI system onto the farm) helping to prevent the risk of chemical or other contamination to the supply network.



Typical pumping system on farm.

Where do I get further information?

For further information please contact us on
(02) 6962 0200.